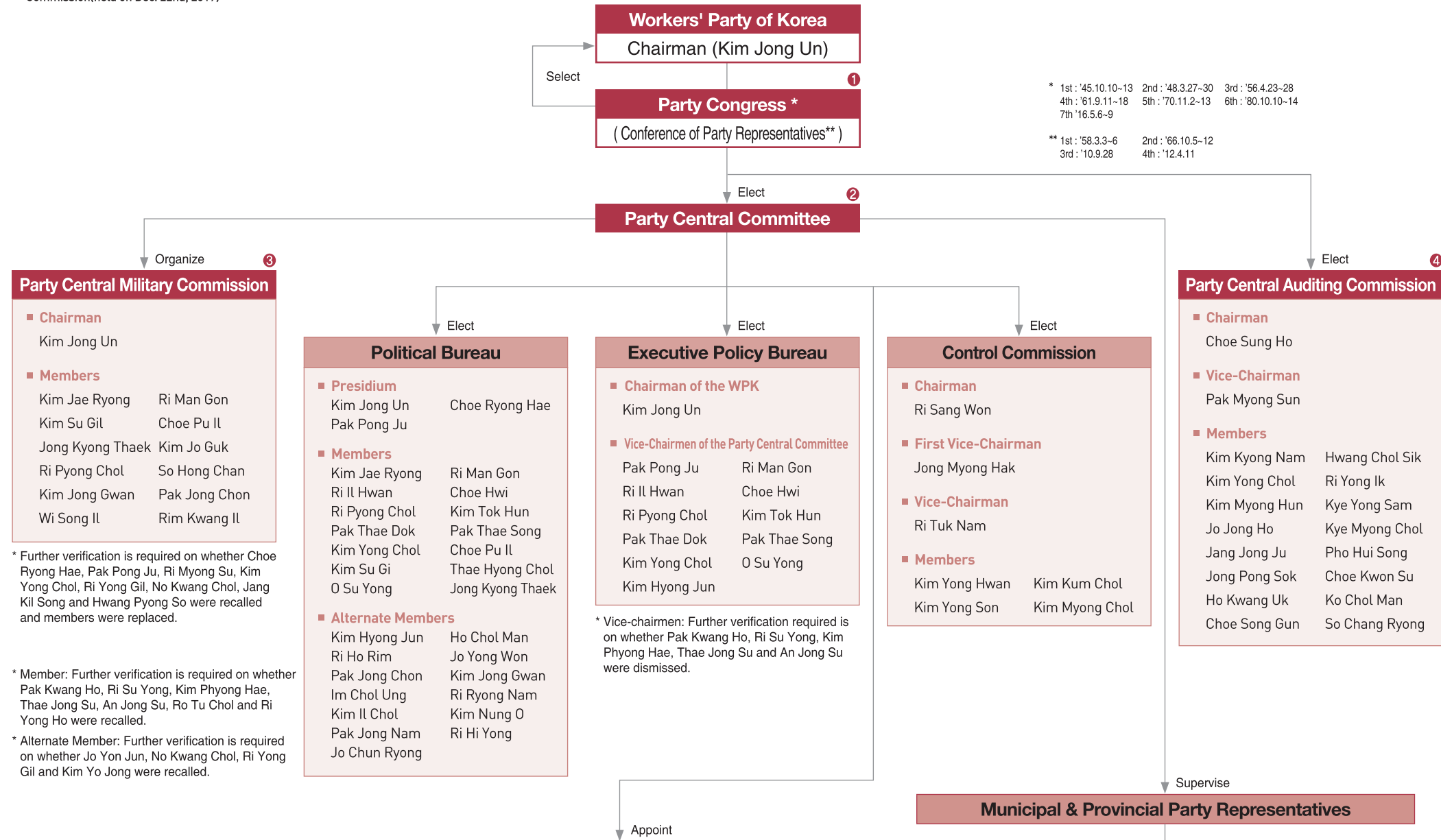


Organizational Chart of
North Korean Leadership
(As of January 2020)

Party Organs

※ This leadership chart has been compiled based on the results of the 4th and 5th Plenary Session of the 7th Party Central Committee(held on Apr. 10th and Dec 28th to 31st, 2019) and the 3rd Enlarged Meeting of the 7th Party Central Military Commission(held on Dec. 22nd, 2019)



* Further verification is required on whether Choe Ryong Hae, Pak Pong Ju, Ri Myong Su, Kim Yong Chol, Ri Yong Gil, No Kwang Chol, Jang Kil Song and Hwang Pyong So were recalled and members were replaced.

* Member: Further verification is required on whether Pak Kwang Ho, Ri Su Yong, Kim Phyeong Hae, Thae Jong Su, An Jong Su, Ro Tu Chol and Ri Yong Ho were recalled.

* Alternate Member: Further verification is required on whether Jo Yon Jun, No Kwang Chol, Ri Yong Gil and Kim Yo Jong were recalled.

Departments & Offices				
Organization & Guidance Department Ri Man Gon	Propaganda & Agitation Department Ri Il Hwan	Cadres Department Ho Chol Man	Light Industry Department	Economic Affairs Department
Science & Education Department Choe Dong Myong	International Department Kim Hyong Jun	Military Department Choe Pu Il	Machine-Building Industry Department Ri Pyong Chol	Working Organization Department Choe Hwi
Agriculture Department	Party History Institute Ro Kwang Sop	Document Archive Kim Jun Son	Civil Defense Department Ri Yong Rae	Appeals Office Ju Yong Sik
Finance Accounting Department Han Kwang Sang	General Affairs Department	United Front Department Jang Kum Chol	Office No.39 Shin Ryong Man	

* Departments of Ri Il Hwan, Kim Hyong Jun, Choe Hwi, Ri Pyong Chol, Choe Pu Il, Ho Chol Man, Han Kwang Sang and Ju Yong Sik are assumed.

** Additional verification is required for departments managed by Kim Tok Hun, Ri Ho Rim, O Il Jong and O Su Yong.

*** Further verification is required on whether Military Department is abolished or renamed.

**** Pak Kwang Ho, Kim Phyeong Hae, An Jong Su, Ri Su Yong, Thae Jong Su and Kim Man Song are assumed to be dismissed.

① The Party Congress and the Conference of Party Representatives set party lines and policies, adopt doctrines and rules, select Chairman of the WPK, and discuss various kinds of party's projects.

② The Party Central Committee organizes and supervises all of the party's projects, and manages the party's finances.

(It convenes the plenary meeting more than once a year.)

- The Political Bureau organizes and supervises all of the party's projects.

- The Executive Policy Bureau discusses and determines the party's internal projects, and organizes and supervises the implementation.

- The Control Commission inspects the party's rules and disciplines.

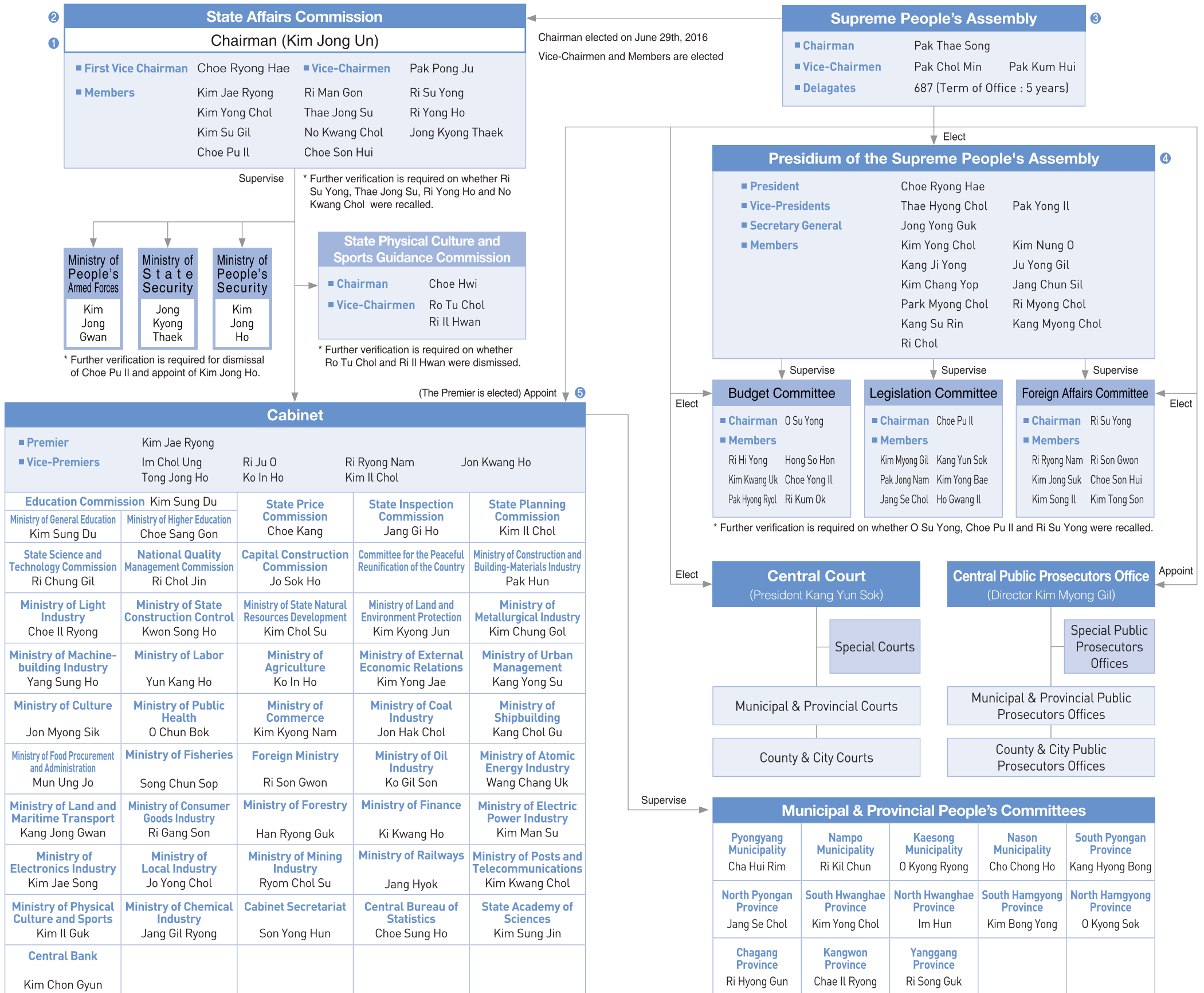
③ The Party Central Military Commission organizes and supervises all of the military projects, establishes the party's military line and policies, and supervises national defense projects.

④ The Party Central Auditing Commission inspects the party's financial management projects.

⑤ Party organs including the Korean People's Army, the Korean People's Internal Security Forces and the Ministry of Railways are also provincial party level organs. [These organs have Party Representatives and a Party Committee, and they are supervised by the Party Central Committee.]

Government Organs

※ This leadership chart has been compiled based on the results of the 14th Supreme People's Assembly's 1st Plenary Meeting(held on Apr. 11th, 2019) and the 5th Plenary Session of the 7th Party Central Committee(held on Dec. 28th to 31st, 2019).



① The Chairman of the State Affairs Commission supervises overall national projects, appoints major national officials, ratifies and abrogates treaties, and declares an emergency, wartime and mobilization order, and organizes and supervises the National Defense Commission during wartime.

② The State Affairs Commission discusses and determines important policies.

③ The Supreme People's Assembly legislates, amends, and supplements the Constitution and all laws and regulations and establishes basic principles for foreign and domestic policies.

④ The Presidium of the Supreme People's Assembly amends and supplements laws according to department, and supervises law abidance of each organ. [When the Supreme People's Assembly is in recess, the Presidium of the SPA organizes or appoints the cabinet.]

⑤ The Cabinet implements the national policies and conducts all administrative works including budget compilation.